

# Doubling

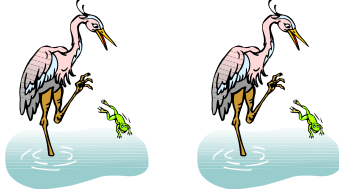
Can you tell teacher owl what numbers you'd get if you doubled the animals below?



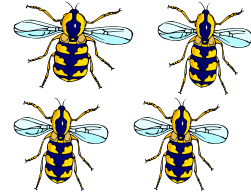
$1 \text{ badger} \times 2 =$



$2 \text{ herons} \times 2 =$



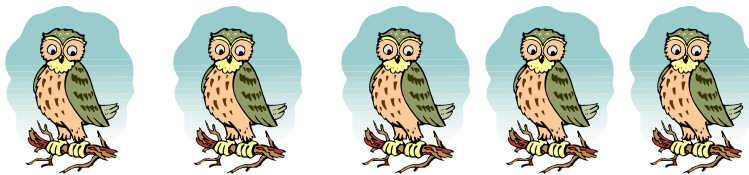
$4 \text{ wasps} \times 2 =$



$3 \text{ weasels} \times 2 =$



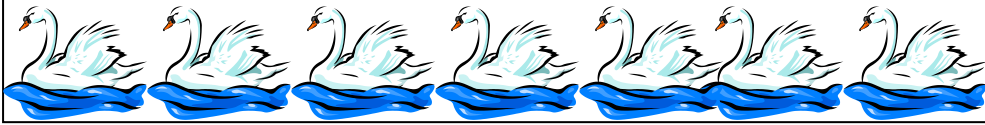
$5 \text{ owls} \times 2 =$



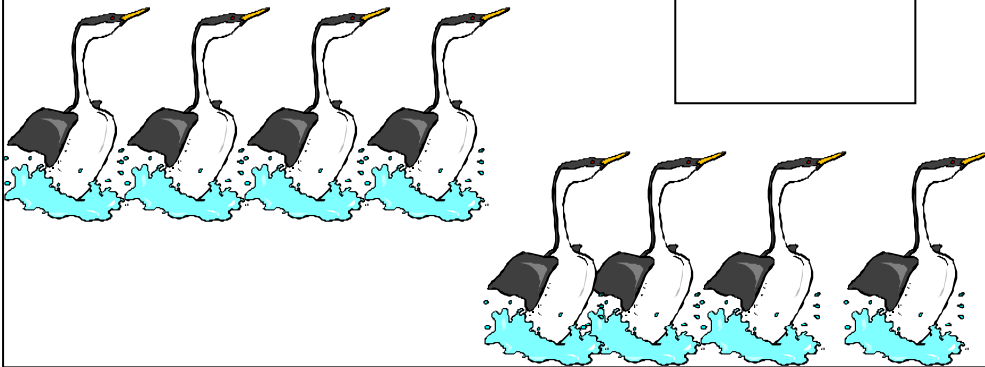
$6 \text{ rabbits} \times 2 =$



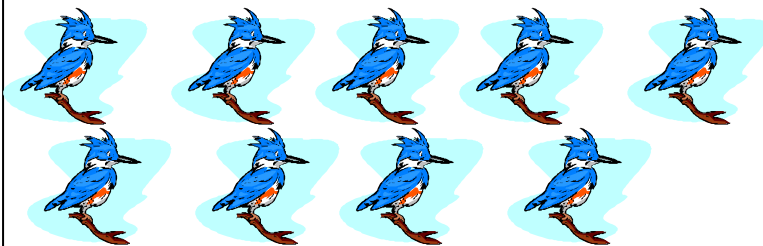
7 swans x 2 =



8 grebes x 2 =



9 kingfishers x 2 =



10 ladybirds x 2 =

