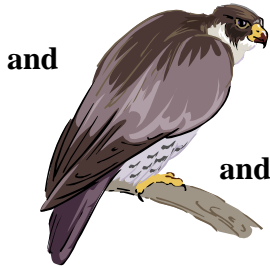


# ANIMAL REPORT



You have been appointed to a television company, as a wildlife presenter. You will have your very own programme, entitled 'Animal Report'. Your job is to take your team of cameramen, lighting and sound engineers, etc., somewhere in the world to present a programme about an animal.

Before you go, you will need to know enough about your animal to enable you to stand in front of a camera and tell millions of people all about it.

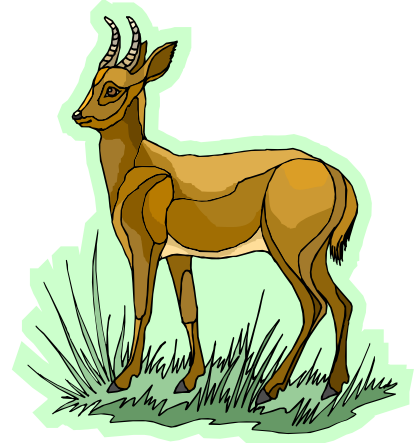
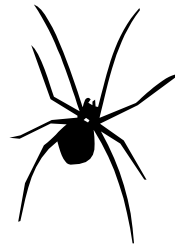


and Firstly, read the piece about getting started. Look for books about your animal read as much as you can.

Look carefully at the 'Enchanted Learning' report layout on the following pages and decide how to structure your report.

You MUST include sections about the following subjects:

1. The animal's name.
2. Anatomy/Appearance
3. Locomotion (How does it move?)
4. Diet
5. Habitat and range
6. Adaptations
7. Life cycles and reproduction
8. Behaviour
9. Defence/Attack
10. Enemies
11. Species survival status (Is it endangered?)
12. Something special
13. Classification (Which group of animals does it belong to?)



You could use the internet to research your animal.

You will need to make a Bibliography of all of your sources.

